



Vacufix Unmatched precision in (p)IOL positioning

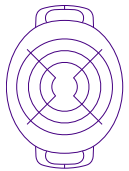
Vacuum enclavation system for iris fixated IOLs

Vacufix

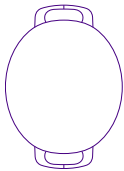
Precision Vacuum Enclavation
for optimal (p)IOL positioning

Vacufix is a smart vacuum enclavation system designed specifically for Ophtec's iris fixated IOLs. It utilizes your existing phaco machine to deliver unmatched precision in lens positioning and centration. The system includes a reusable handpiece with two specialized tips - for the right and left side - ensuring consistent and accurate enclavation. The tip with an integrated aspiration hole creates a stable iris bridge by capturing a fixed and reproducible amount of iris tissue, which is especially beneficial in toric IOL procedures. For Artisan Aphakia cases, Vacufix offers enhanced control and ease of use, even when dealing with floppy iris tissue.

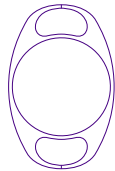
Designed for:



Artiplus



Artiflex



Artisan



Discover all
specs

Key Features & Benefits

- ✓ Vacuum-assisted enclavation for superior (p)IOL positioning and centration
- ✓ Aspiration tip ensures a perfect iris bridge with:
 - A fixed amount of iris tissue
 - Reproducible results every time
- ✓ Pre-curved tip design allows easy access to the enclavation site
- ✓ Compatible with all standard phaco machines
- ✓ Sustainable choice – fully reusable



Vacufix

Instructions



Preperation of the phaco unit

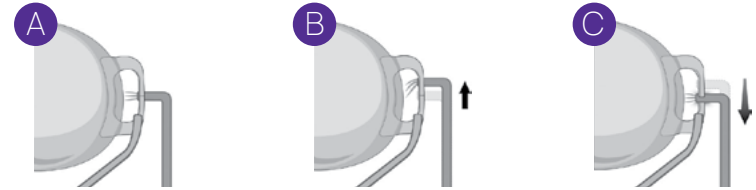
1. Check the phaco unit; Irrigation/Aspiration Program must be selected.
2. Recommended settings:
3. a. Peristaltic pump vacuum level: 200 mmHG, Aspiration flow: 40 cc/minute.
b. Venturi pump vacuum level: 200 mmHG.
4. Prepare the tubings.
5. Block the irrigation tube with the irrigation plug.
6. Connect the aspiration tip to the handpiece. Confirm with the surgeon which side to start on.
7. Place the aspiration tip in a bowl filled with saline solution and depress the phaco footswitch to ensure all air is removed from the system.
8. Hand the Vacufix to the surgeon.

Surgery

- Insert the Implantation Forceps through the main incision.
- Insert the Vacufix through the paracentesis.
- Hold the lens with the Implantation Forceps.

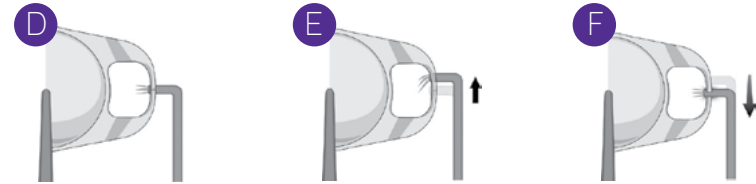
For Artiflex & Artiplus:

Hold the lens with the implantation forcept on the haptic (picture A, B and C)



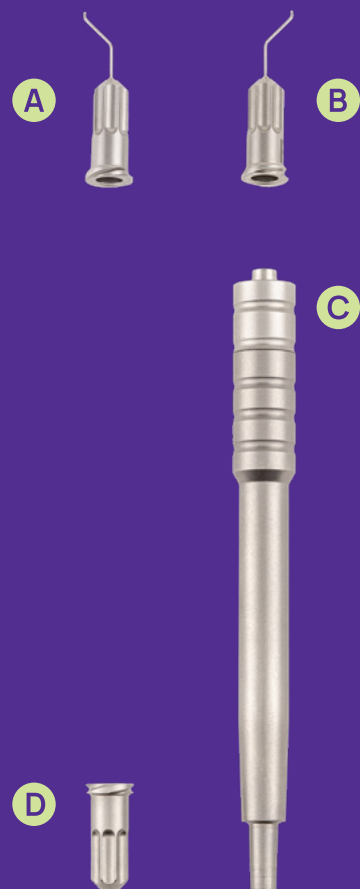
For Artisan:

Hold the lens with the implantation forceps on the optic (picture D, E and F)

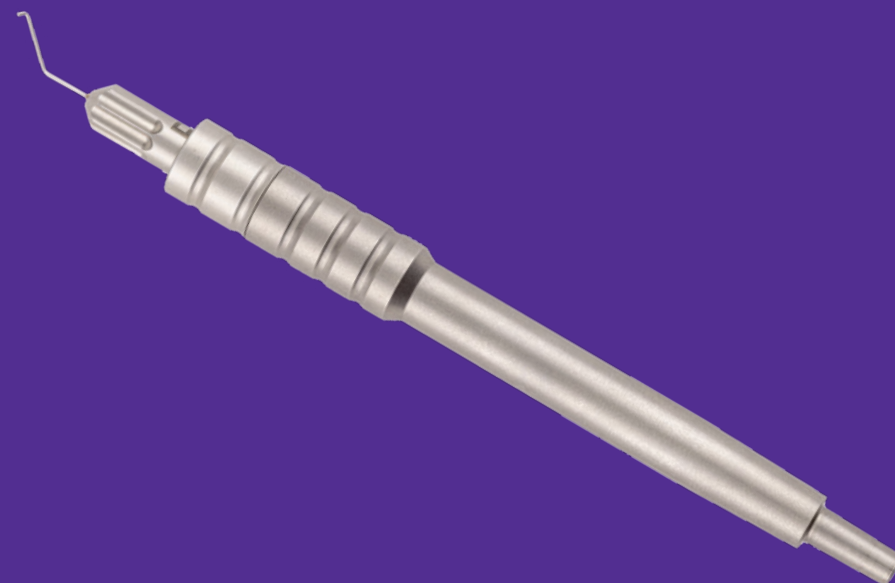


- Place the aspiration tip of the Vacufix cannula flat onto the iris surface underneath the slot of the claw.
- Make sure the Vacufix tip stays in contact with the iris surface until the vacuum has reached the maximum level by depressing the footswitch of the phaco.
- Gently lift the Vacufix with the iris fold through the free part of the claw with described movement(s).
- Release the vacuum by releasing the footswitch.
- Remove the Vacufix from the eye.
- Verify the amount of iris tissue the centration and positioning of the (P)IOL.
- Perform the same procedure on the other side.

Precision Vacuum Enclavation for optimal (p)IOL positioning



- A. Left aspiration tip
- B. Right aspiration tip
- C. Handpiece
- D. Irrigation plug



Article codes:

- AK-1309/B Vacufix - Set cannulae with handpiece and plug (C + D)
- AK-1301/B Vacufix - Right aspiration tip - reusable (B)
- AK-1301/B1 Vacufix - Left aspiration top - reusable (A)



So now you've met Vacufix. Do you want to get to know us better? We are here, for any questions. Just give us a call or visit our website.

Global Head Office

Schweitzerlaan 15
9728 NR Groningen
The Netherlands

+31 50 525 19 44
info@ophtec.com
ophtec.com



Contact
information
for all our local
offices

Information in this document is subject to change. Always consult the official IFU before use.
©2025 Ophtec bv, A901000227-3