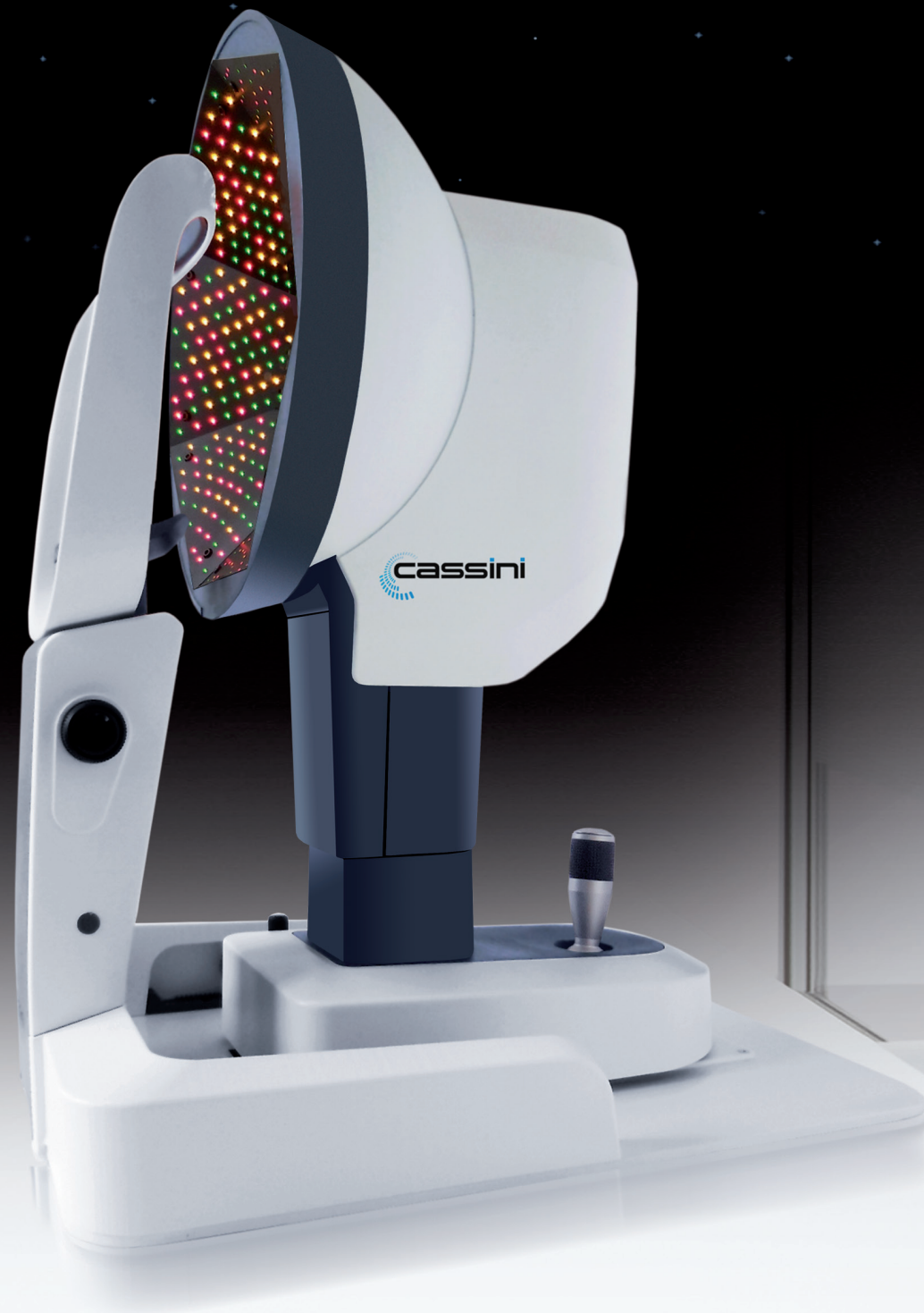




TOTAL CORNEAL ASTIGMATISM

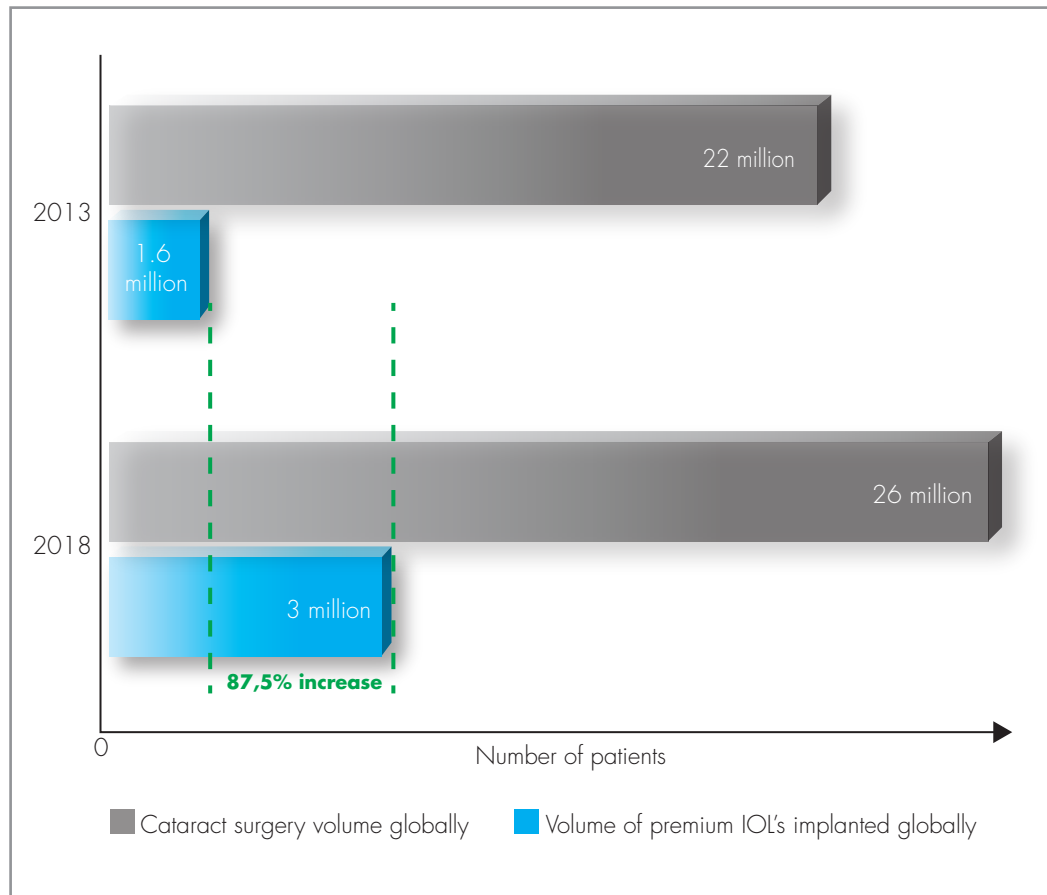
Premium treatment starts with
premium diagnosis

Complete your cataract-refractive platform



The premium IOL opportunity

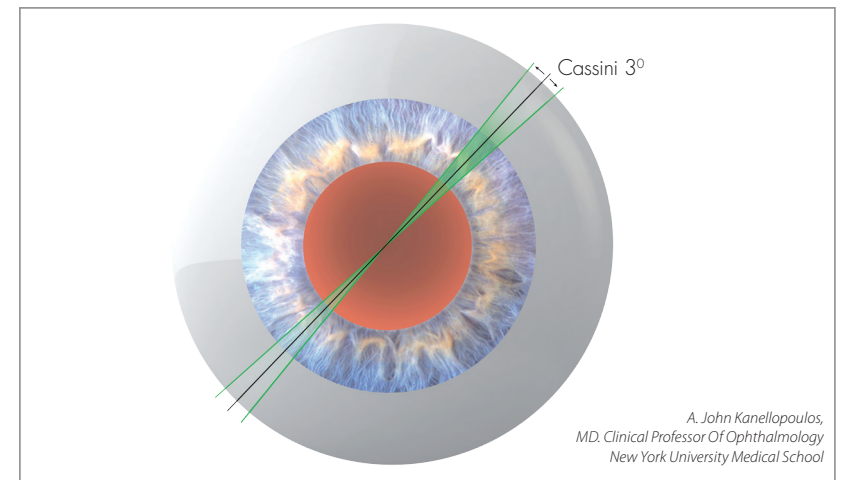
Premium IOL market to nearly double in next 5 years



Source: Market scope 2013 Comprehensive Report on the Global IOL Market

There is a huge global unmet need for improved vision correction during cataract surgery. With the total volume of cataract surgeries rising to approximately 30 million per year in 2030, more than 50% of these patients could benefit from astigmatism correction.

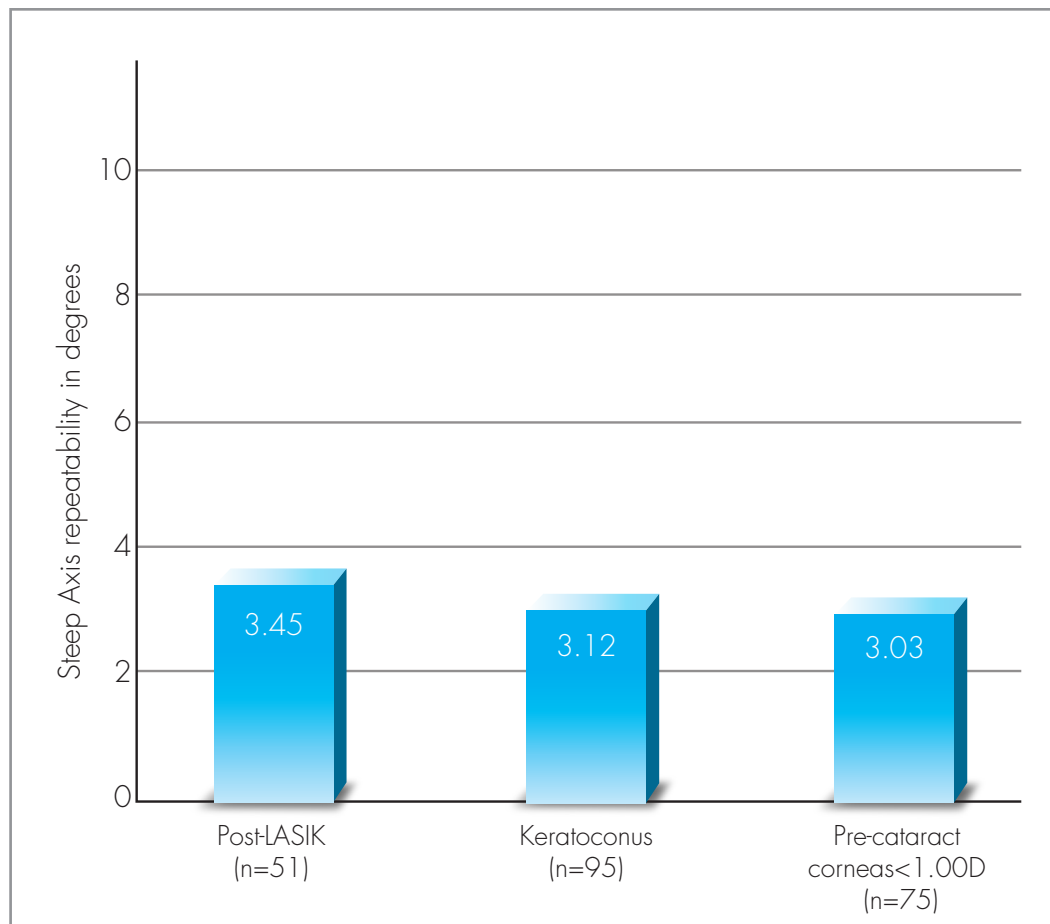
The challenge of determining the exact axis of astigmatism for cataract surgery



The expectations and demands of patients have risen in recent years and the search for perfection becomes critical, especially when it comes to astigmatism correction.

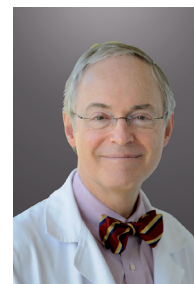
Getting the Axis right

Axis repeatability in complicated corneas



Source: Kanellopoulos, Asimellis, Friess. CRSToday 2014

What top surgeons have to say about Cassini



"Cassini is a better alternative for toric IOL planning and, as such, stands to pave the way for surgeons who have been hesitant to implant these premium lenses"

Douglas Koch, M.D.
Baylor College of Medicine, Houston, TX, USA



"Superior in central corneal measurement to Placido and Scheimpflug in case of high irregularity"

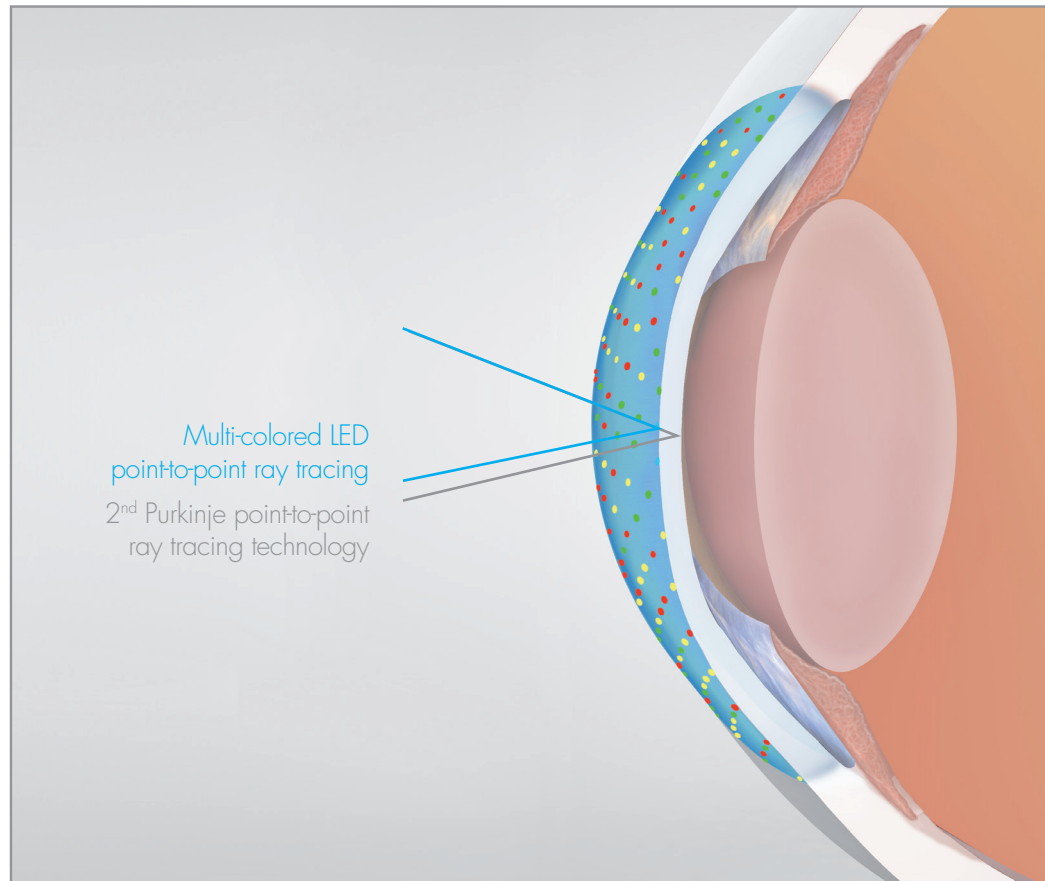
A. John Kanellopoulos, M.D.
Laservision Eye Institute, Athens, Greece
New York University Medical School, New York, USA



"With Cassini preoperative planning, you can confidently treat your patient's cataract with Toric IOLs and provide precise astigmatism correction in a single procedure"

Jonathan Solomon, M.D.
Solomon Eye Associates, Bowie, MD, USA

Total Corneal Astigmatism

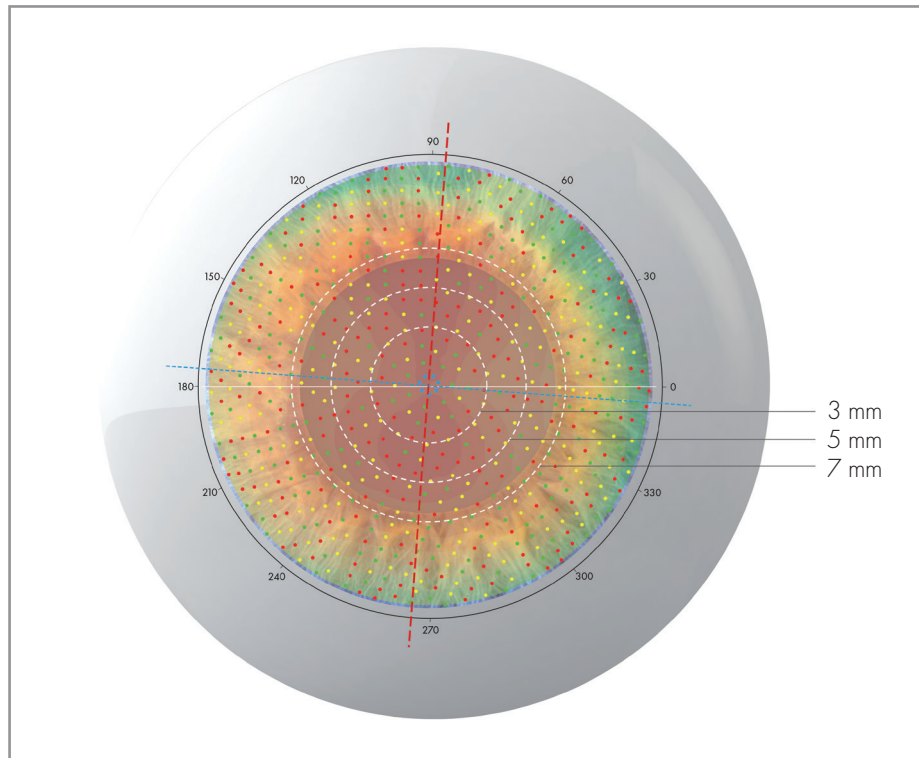


Cassini uses patented multi-colored LED point-to-point ray tracing to provide a GPS-like analysis of the cornea along with high-resolution images utilized for surgical guidance. The unique measuring principle enables highly accurate and repeatable measurements of the Total Corneal Astigmatism.

Cassini provides critical information to properly select the power and position of Toric intraocular lenses

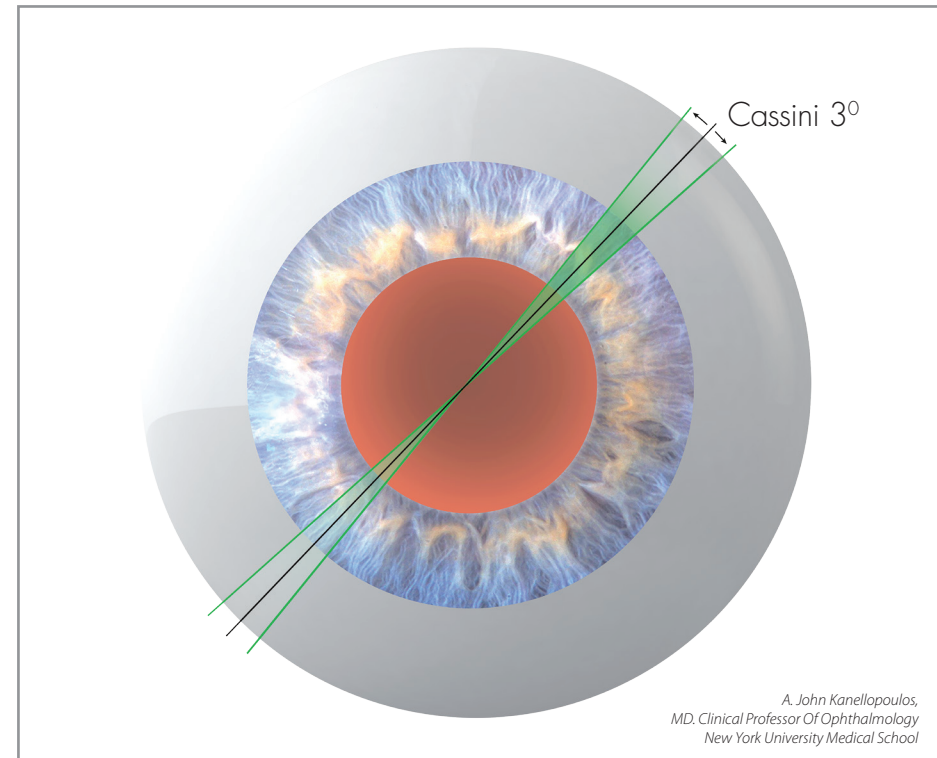
True Technology

True Central Coverage - No Central Scotoma



The multi-colored LED coverage is equal across the entire cornea, leaving no space for central scotoma.

True Axis - True Magnitude

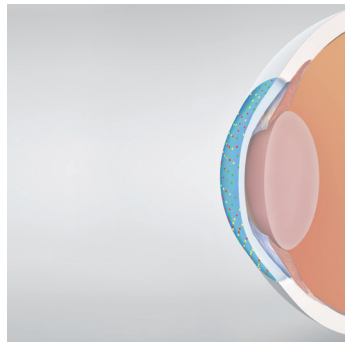


A. John Kanellopoulos,
MD, Clinical Professor Of Ophthalmology
New York University Medical School

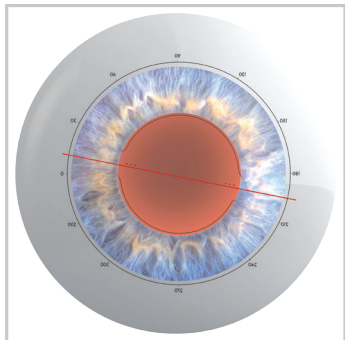
The accurate axis and magnitude of astigmatism plays a vital part in the correct selection and positioning of a toric IOL.

Increase your Confidence

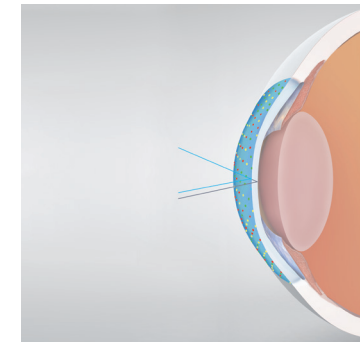
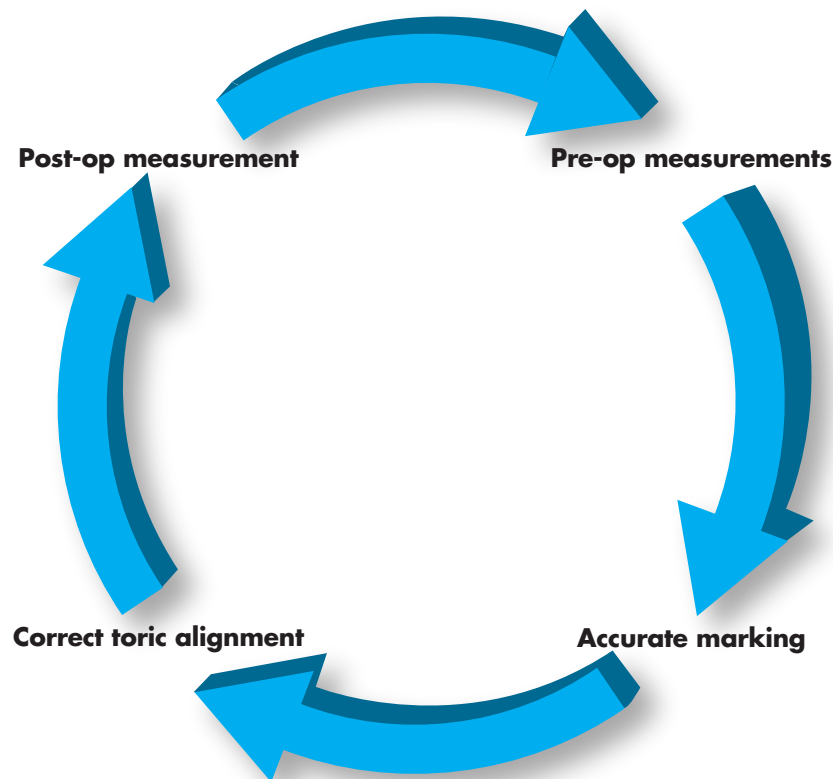
Addressing the four most common problems when correcting astigmatism*



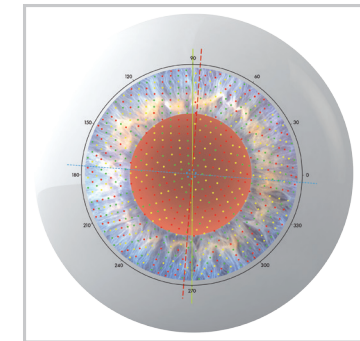
The accurate post-op Cassini measurements enable the surgeon to optimize the Surgically Induced Astigmatism (SIA)



Based on highly accurate measurements and marking, the Toric alignment can be done with high level of confidence



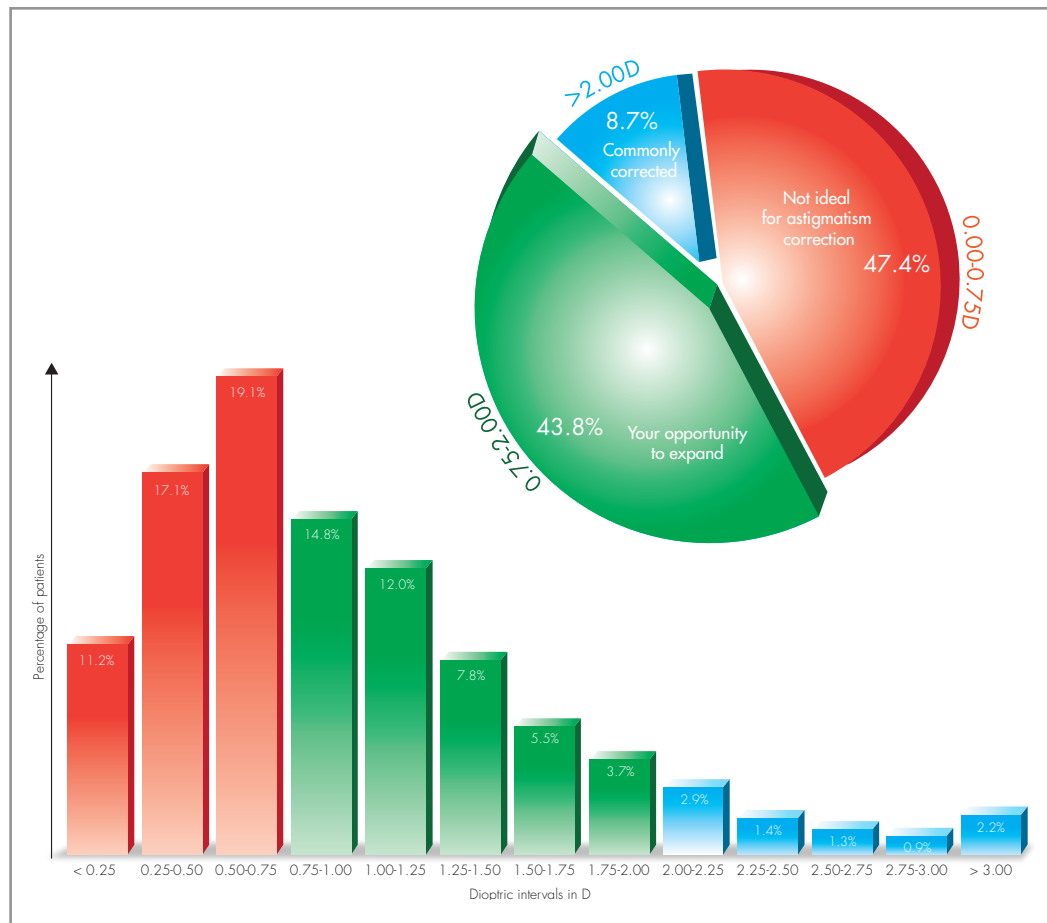
With its accuracy and precision, Cassini reduces pre-operative measurements errors



Along with real time eye-tracking systems such as TrueGuide**, Cassini can eliminate marking errors

Drive more Toric procedures

More than 50% of patients eligible for astigmatic correction



Source: Hill Distribution Data. Provided courtesy of Dr. Warren Hill.

Your opportunity to expand

Most people have astigmatism to some extent. A study of more than 6,000 cataract patients confirms that over 50% of cataract patients have a level of astigmatism that falls within the range correctable by a Toric IOL. That means that a premium IOL is an excellent option for a significant number of your cataract patients.

True data increases your confidence in expanding your premium procedure volume.

	Cassini Specifications
True Axis	<ul style="list-style-type: none"> • Multicolor LED Ray-Tracing combined with 2nd Purkinje Imaging Technology • Axis repeatability within 3 degrees
True Magnitude	<ul style="list-style-type: none"> • Diopter range 4.00D – 171.00D • Display K-values per zone 3 / 5 / 7 / 9 mm
True Capture	<ul style="list-style-type: none"> • Instantaneous Auto Capturing • Measurement Quality Factor parameter • Topographic indices: Shape factor, eccentricity, Asphericity, form factor • Keratoconus indices: Surface Asymmetry Index, Surface Regularity Index
True Accuracy	<ul style="list-style-type: none"> • Submicron accuracy due to color LED triangulation technology <0.8µm
True Technology	<ul style="list-style-type: none"> • Pupillometry programs - mesopic & photopic • HD External Ocular Photography • Topographic maps: Axial, Refractive, Tangential, Elevation, Recorded Image and High Order Aberrations • Multiple color scale options • Incorporated Patient management program • Connectivity: Femto secondlasers, Guidance systems, Toric IOL calculators, USB, Direct print, PDF, JPG, PNG, Excel

528 mm/20.8"

